

# Eclizia

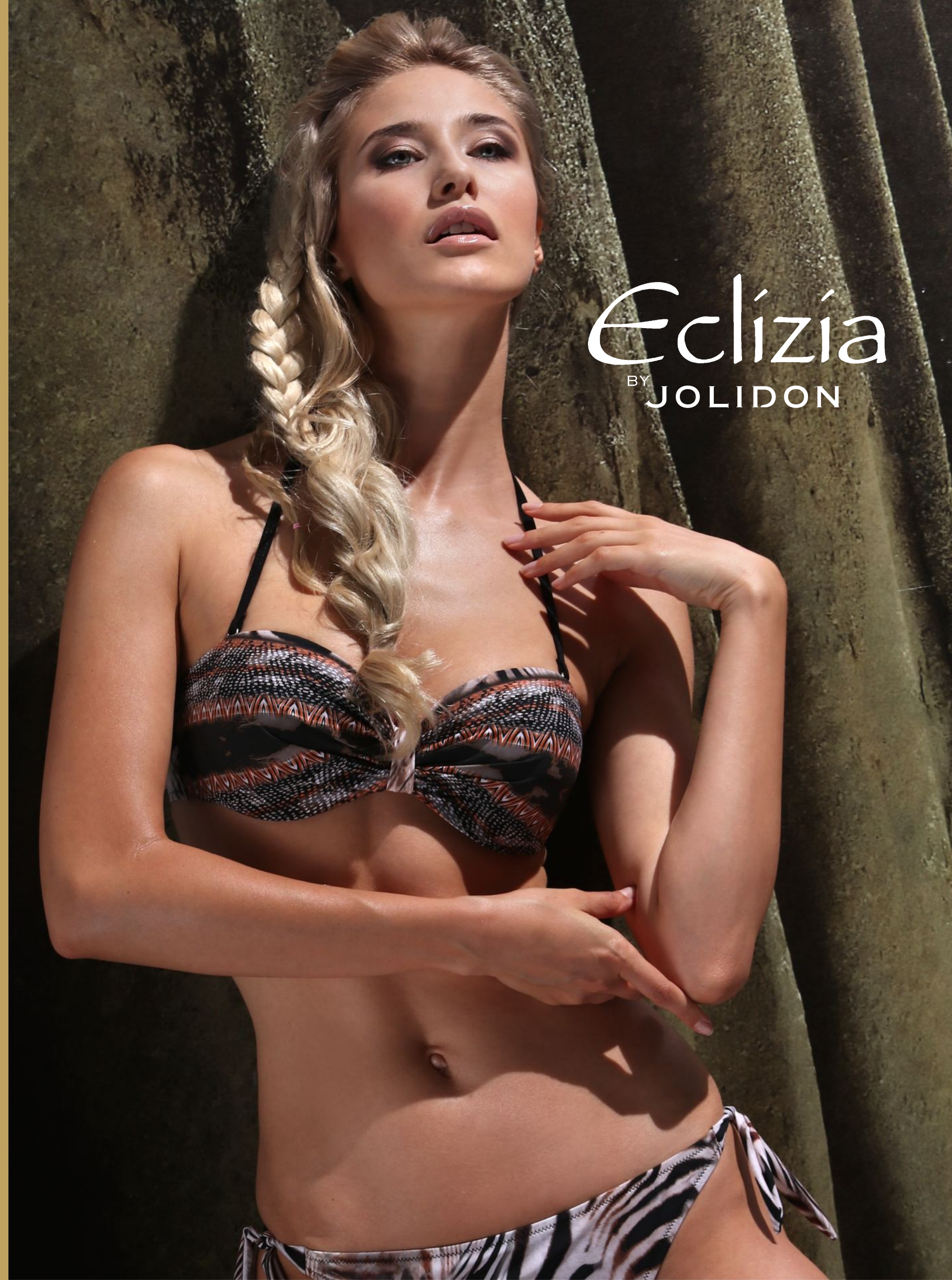
BY JOLIDON

# Eclizia

BY JOLIDON

JOLIDON ROMANIA, 400139 Cluj-Napoca, str. Tabacarilor nr. 1, Romania, tel.: 0040 264 419391; fax: 0040 264 447869, e-mail: jol@jolidon.ro,  
JOLIDON FRANCE S.a.r.l., Lyon, Parc d'Affaires Roosevelt, Rue des Frères Lumière, 69120 Vaulx en Velin, Rhone,  
tel: 0033(0)662830102, email: jolidonlyon@wanadoo.fr, jolidonfrance@orange.fr,  
JOLIDON ITALIA SRL, Via Cavour 107/G, 20056 Trezzo sull'Adda(MI), tel: 0039 0290962166, fax : 0039 0290929636, email: jolidon@jolidon.it,  
JOLIDON POLAND SPz.o.o. Ul. Zbszynska 4, 91-342 Lodz, Poland, tel: 0048 51 605 6901, 0048 42 227 0774, fax: 0048 42 213 1917

[www.jolidon.com](http://www.jolidon.com)





Eclizia  
BY JOLIDON

# DIVA



One piece, cups S-XLBC  
 Intero imbottito 42-48BC

EF7



# DIVA



Push-up, removable pads S-XLBC  
 Push-up, imbottitura estraibile 42-48BC



EF5



Padded bandeauS-XL  
 Fascia imbottita 42-48B



EF6





# PRIVILEGE

One piece, gradual cups S-XLBC  
 Intero, coppa graduata 42-48BC



## EF16

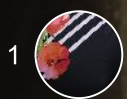




Push-up, gel cups S-XLB, S-LC  
 Push-up, coppa gel 42-48B, 42-46C



EF18



PRIVILEGE



Cups S-XLBCD  
 Reggiseno imbottito 42-48BCD



EF17



# SAVANNAH



Push-up, gradual cups S-XL,B, S-LC  
 Push-up, coppa graduata 42-48B, 42-46C



EF28

Triangle S-XL  
 Triangolo 42-48B



EF26

EB1



Bandeau, gradual cups S-XLBC  
 Fascia, coppa graduata 42-48BC



EF27

EB1



Push-up, gradual cups S-XLB, S-LC  
Push-up, coppa graduata 42-48B, 42-46C



EF37



Triangle S-XL  
Triangolo 42-48B



EF36

R4



ITAKA



Bandeau S-XL  
Fascia 42-48B



EF35

R4







One piece, cups S-XLBC  
Intero imbottito 42-48BC



EF10

- FJM 
- FPS 
- FPL 
- FSC 
- FNR 



Bandeau, gradual cups S-XLBC  
Fascia, coppe graduata 42-48BC



EF9

- FJM 
- FPS 
- FPL 
- FSC 
- FNR 



SWAMI

Cups S-XLBCD  
Reggiseno imbottito 42-48BCD



EF8

- FJM 
- FPS 
- FPL 
- FSC 
- FNR 

# SUNRISE



Bandeau, gradual cups S-XLBC  
 Fascia, coppa graduata 42-48BC



Push-up, gel cups S-XLB, S-LC  
 Push-up, coppa gel 42-48B, 42-46C





PACHA



One piece, non padded S-XL  
 Intero non imbottito 42-48B

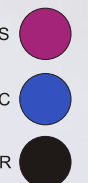


EF13

FPS

FSC

FNR





Balconette, gradual cups S-XLBC  
 Fascia, coppa graduata 42-48BC



EF12

- 1
- 2
- FPS
- FSC



PACHA



Push-up, cups, removable pads S-XLBC  
 Push-up, imbottitura estraibile 42-48BC



EF11

- 1
- 2
- FPS
- FSC

# AMORE



Bandeau non padded S-XL  
 Fascia non imbottita 42-48B



EF2

FAN

FAG



Triangle non padded S-XL  
 Triangolo nonimbottito 42-48B



EF1

FAN

FAG

# ACAPULCO



Balconette, cups S-XLBCD  
 Fascia imbottita 42-48BCD



EF20



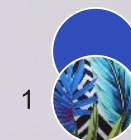
1



One piece, cups S-XLBC  
 Intero imbottito 42-48BC



EF19



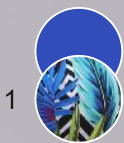
1



Balconette, cups, adjustable slip S-XLBCD  
 Fascia imbottita, slip con fianchetto 42-48BCD



EF20L



1



ACAPULCO

Cups S-XLBCD  
 Reggiseno imbottito 42-48BCD



EF21



1



# FUSION

Bandeau, removable pads S-XL  
Fascia, imbottitura estraibile 42-48B



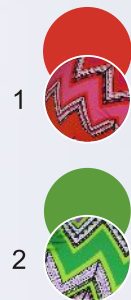
EF32



Push-up, gradual cups S-XLB, S-LC  
Push-up, coppa graduata 42-48B, 42-46C



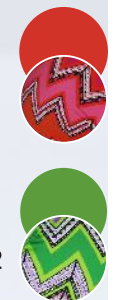
EF34



Triangle, removable pads S-XL  
Triangolo, imbottitura estraibile 42-48B




EF33

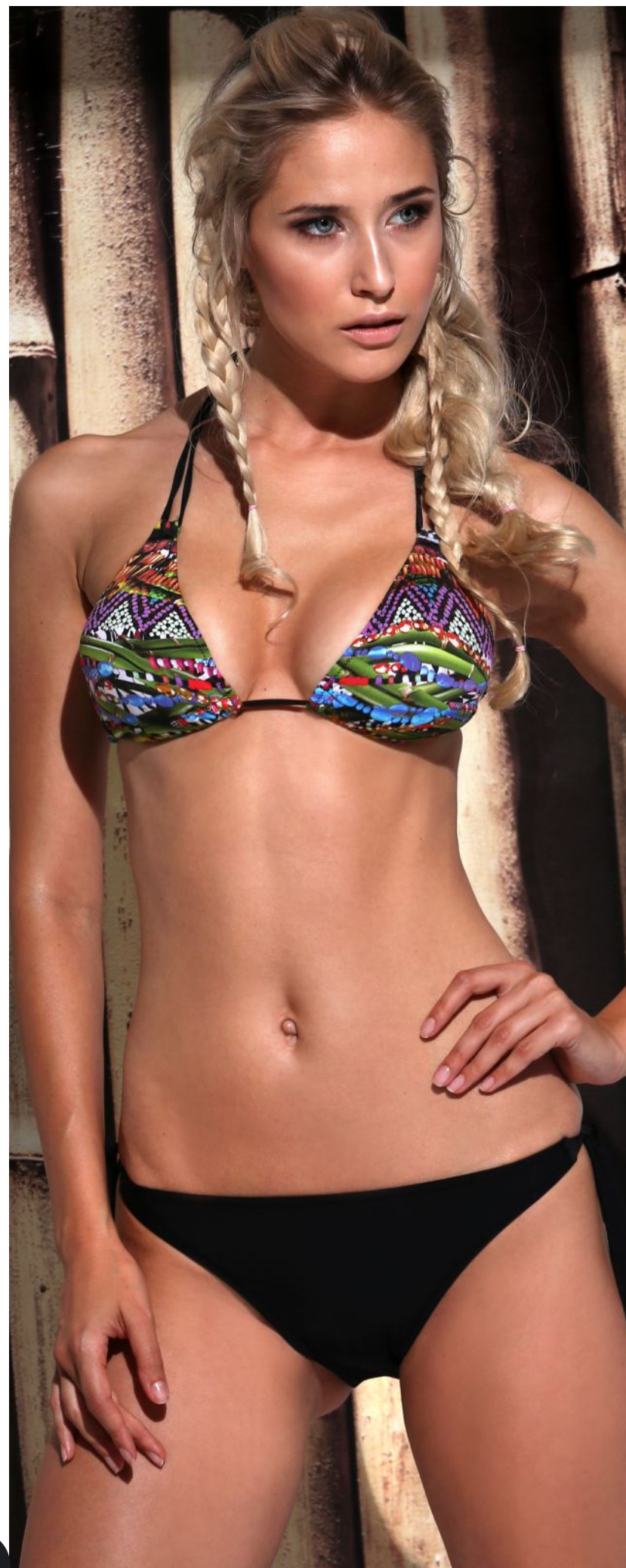



# USHUAIA



EF30  Push-up, gel cups S-XLB, S-LC  
Push-up, coppa gel 42-48B, 42-46C

1



EF29  Triangle, removable pads S-XL  
Triangolo, imbottitura estraibile 42-48B



Bandeau, gradual cups S-XLBC  
Fascia, coppa graduata 42-48BC



EF31

1





Bandeau, non padded, double face S-XL  
Fascia nonimbottita double face 42-48B



EF14



LUZZ



Triangle, non padded, double face S-XL  
Triangolo nonimbottita double face 42-48B



EF15



# EDEN



Max-Up XS-XL  
Max-Up 40-48B



## EF25

M16



M15



One piece, cups S-XL-BC  
Intero imbottito 42-48BC



## EF23

M16



M15

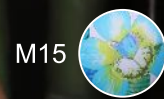




Bandeau, gradual cups S-XLBC  
Fascia, coppa graduata 42-48BC



EF24



EDEN

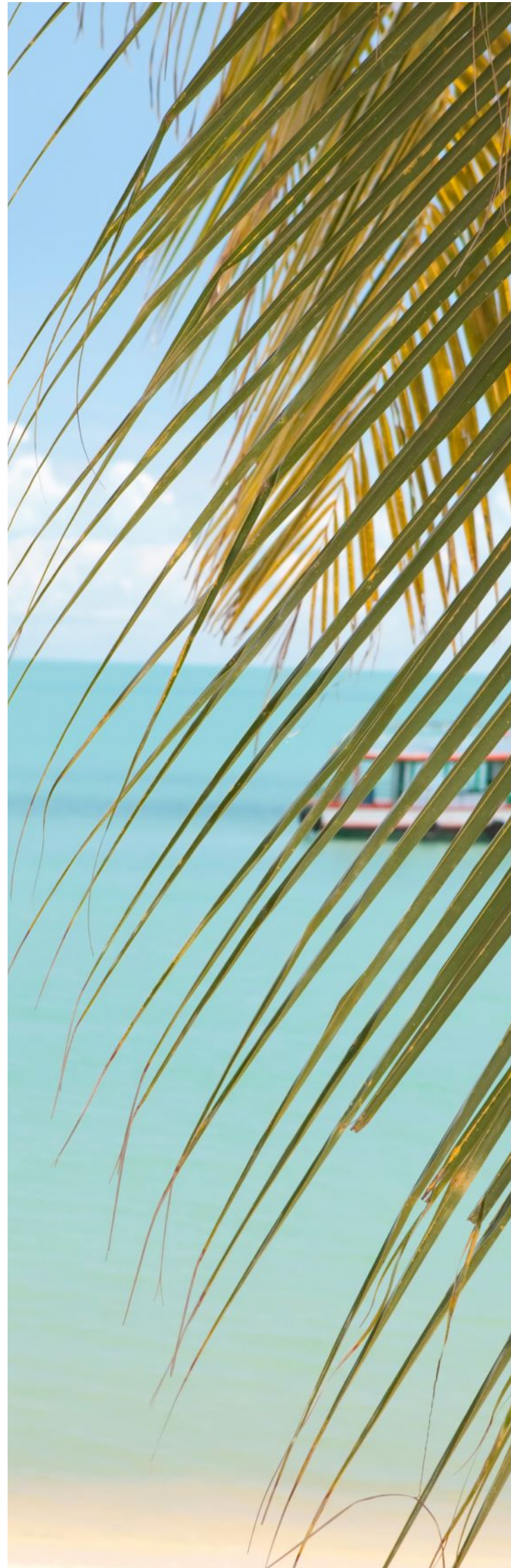


Push-up, gel cups S-XL.B, S-LC  
Push-up, coppa gel 42-48B, 42-46C



EF22





EF1 \_\_\_\_\_ pg. 25

EF2 \_\_\_\_\_ pg. 24

.

EF3 \_\_\_\_\_ pg. 19

EF4 \_\_\_\_\_ pg. 18

EF5 \_\_\_\_\_ pg. 4

EF6 \_\_\_\_\_ pg. 5

EF7 \_\_\_\_\_ pg. 3

EF8 \_\_\_\_\_ pg. 17

EF9 \_\_\_\_\_ pg. 16

EF10 \_\_\_\_\_ pg. 15

EF11 \_\_\_\_\_ pg. 23

EF12 \_\_\_\_\_ pg. 22

EF13 \_\_\_\_\_ pg. 21

EF14 \_\_\_\_\_ pg. 34

EF15 \_\_\_\_\_ pg. 35

EF16 \_\_\_\_\_ pg. 7

EF17 \_\_\_\_\_ pg. 9

EF18 \_\_\_\_\_ pg. 8

EF19 \_\_\_\_\_ pg. 27

EF20 \_\_\_\_\_ pg. 26

EF20L \_\_\_\_\_ pg. 28

EF21 \_\_\_\_\_ pg. 29

EF22 \_\_\_\_\_ pg. 39

EF23 \_\_\_\_\_ pg. 37

EF24 \_\_\_\_\_ pg. 38

EF25 \_\_\_\_\_ pg. 36

EF26 \_\_\_\_\_ pg. 10

EF27 \_\_\_\_\_ pg. 11

EF28 \_\_\_\_\_ pg. 10

EF29 \_\_\_\_\_ pg. 32

EF30 \_\_\_\_\_ pg. 32

EF31 \_\_\_\_\_ pg. 33

EF32 \_\_\_\_\_ pg. 30

EF33 \_\_\_\_\_ pg. 31

EF34 \_\_\_\_\_ pg. 30

EF35 \_\_\_\_\_ pg. 13

EF36 \_\_\_\_\_ pg. 12

EF37 \_\_\_\_\_ pg. 12